

Traynor O'Toole Office Fit-Out

Concourse Building, Beacon Court, Sandyford, Dublin 18.

CLIENT:

Traynor O'Toole
Architects

ARCHITECT:

Traynor O'Toole
Architects

PROJECT VALUE:

€1m

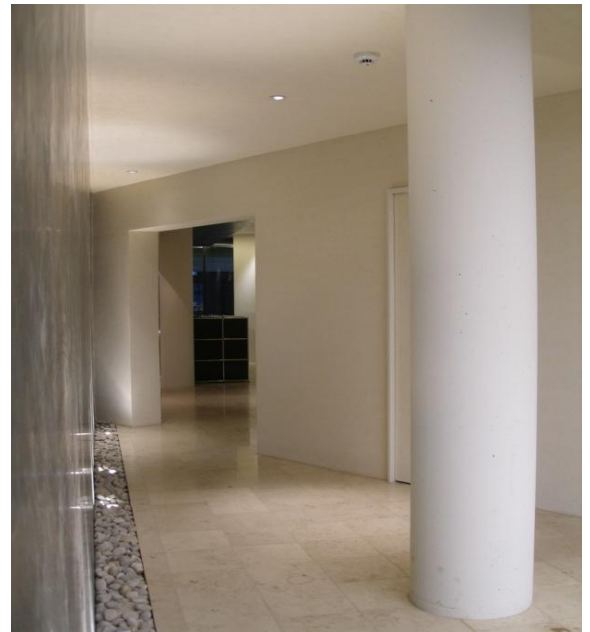
PROJECT STATUS:

Completed Sept 2006

We were commissioned by Traynor O'Toole architects to carry out the full mechanical and electrical consultancy for their office fit-out on the 3rd floor of the Concourse Building, Beacon Court, Sandyford.

The office fit-out was designed and installed to the highest specification and quality.

The high spec project features include full air conditioning to office, feature lighting installation, and data installation.



Apex Business Centre,
Blackthorn Road,
Sandyford,
Dublin 18,
Ireland

T: +353 (0) 1 2932220

F: +353 (0) 1 2932201

E: info@ethoseng.ie

www.ethoseng.ie