

The Hyde Building

The Park, Carrickmines, Dublin 18

CLIENT:
Park Developments

ARCHITECT:
Traynor O'Toole
Architects

PROJECT VALUE:
€5m

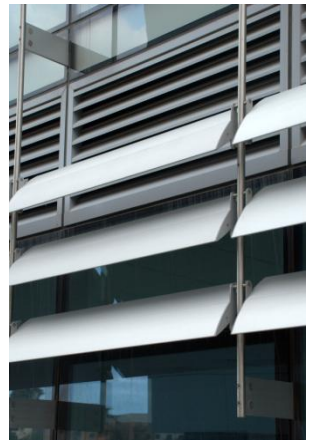
PROJECT STATUS:
Completed Oct 2008

The Hyde Building at the Park in Carrickmines is a 6,000 square metre office building. The building comprises 40 own door office units each opening onto a central atrium.

The high spec project features include comfort cooling VRV installation, feature lighting installation, data installation, full landlord services,, basement car parks and external site services.

The buildings façade makes use of brise soleil and low solar transmittance glazing to reduce solar gains into the working spaces and hence the requirement for air conditioning.

The central atrium incorporates large opening sections for fire/smoke venting which is utilised to provide natural ventilation to the central common space.



Apex Business Centre,
Blackthorn Road,
Sandyford,
Dublin 18,
Ireland

T: +353 (0) 1 2932220
F: +353 (0) 1 2932201
E: info@ethoseng.ie

www.ethoseng.ie