

## Concourse Building

Beacon Court, Sandyford, Dublin 18.

CLIENT:  
Landmark  
Developments

ARCHITECT:  
Traynor O'Toole  
Architects

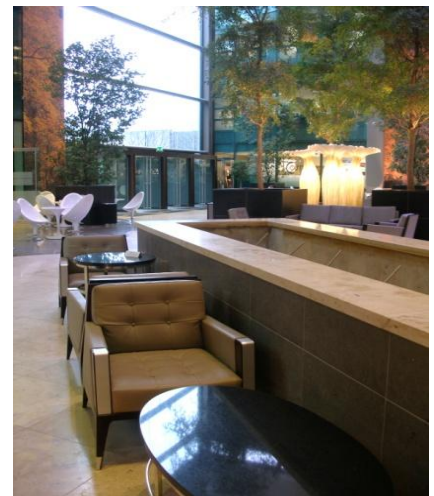
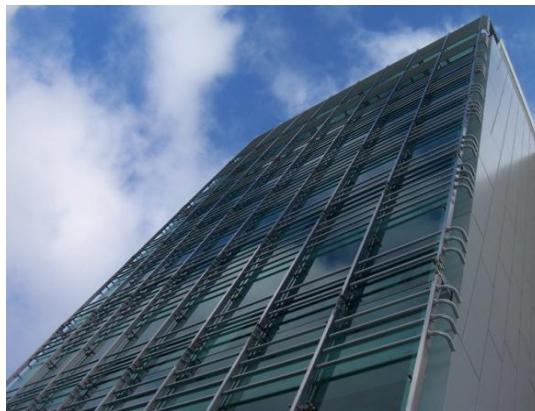
PROJECT VALUE:  
€16.5m

PROJECT STATUS:  
Completed June 2006

The Concourse Building is 41,000 square foot commercial office development located in Beacon Court, Sandyford, Dublin 18.

The M&E installations were designed to meet our clients requirements with particular emphasis on flexibility and ease of future M&E fit-outs as required, thus eliminating disruption of service to existing tenants.

The high spec project features include a 750m<sup>2</sup> atrium incorporating shops, cafes and dining areas, duplex panoramic elevators to offices over 5 floors, comfort cooling VRV installation, feature lighting installation, data installation, full landlord services, high induction ventilation, and underfloor heating.



Apex Business Centre,  
Blackthorn Road,  
Sandyford,  
Dublin 18,  
Ireland

T: +353 (0) 1 2932220  
F: +353 (0) 1 2932201  
E: [info@ethoseng.ie](mailto:info@ethoseng.ie)

[www.ethoseng.ie](http://www.ethoseng.ie)