

Canal Harbour

Dublin, Ireland

CLIENT:
Explore Investments

ARCHITECT:
HKR Architects

PROJECT VALUE:
€180m

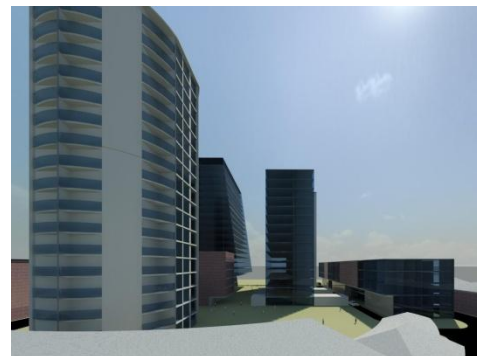
PROJECT STATUS:
Planning

The Canal Harbour project involves the regeneration of the Grand Canal area of Dublin and will comprise of a 650,000ft² mixed use development on completion. This project will comprise of 420,000ft² of commercial space, 96,000ft² medical centre, and 120 high specification apartments.

The building services will include a central energy centre comprising of biomass boilers, combined heat and power (CHP), and condensing gas fired boilers.

As part of our consultancy services we have carried out dynamic thermal simulations on the proposed buildings using the IES <Virtual Environment> suite of software.

We utilised our 3D Revit Suite of software to carry out a solar Suncast analysis on the proposed buildings.



Apex Business Centre,
Blackthorn Road,
Sandyford,
Dublin 18,
Ireland

T: +353 (0) 1 2932220
F: +353 (0) 1 2932201
E: info@ethoseng.ie

www.ethoseng.ie