

Beacon Hospital

Sandyford, Dublin 18, Ireland

Beacon Hospital is a full service hospital which comprises 238,000 square feet over 9 floors. It has capacity for 183 beds. Treatment facilities in Beacon include 8 operating theatres with dedicated rooms for Neurosurgery, Urology, Cardiac, General, Orthopaedic and Ophthalmic Surgery.

It has 2 Endoscopy suites, a state of the art Oncology day treatment centre, and therapeutic radiography with LINAC- linear accelerator.

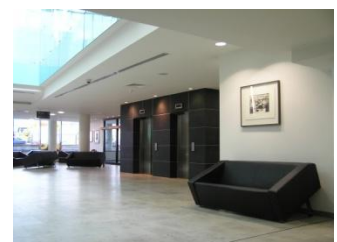
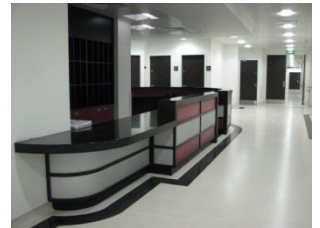
Beacon has 14 Critical Care Beds individually capable of isolating any patient. Beacon hospital also has 3 Cath Labs with state of the art equipment installed

CLIENT:
Beacon Medical Group

ARCHITECT:
Traynor O'Toole
Architects

PROJECT VALUE:
€130m

PROJECT STATUS:
Completed Sept 2006



Apex Business Centre,
Blackthorn Road,
Sandyford,
Dublin 18,
Ireland

T: +353 (0) 1 2932220
F: +353 (0) 1 2932201
E: info@ethoseng.ie

www.ethoseng.ie