

Airside – Phase 4 Blocks 1 & 2

Airside Business Park, Swords, Co. Dublin.

Airside Phase 4, Blocks 1 & 2 is a 140,000 square foot commercial office development located in Airside Business Park, Swords, Co. Dublin.

The M&E installations were designed to meet our clients requirements with particular emphasis on flexibility and ease of future M&E fit-outs as required, thus eliminating disruption of service to existing tenants.

The high spec project features include comfort cooling VRV installation, feature lighting installation, data installation, full landlord services, solar thermal technology, basement car parks and external site services.

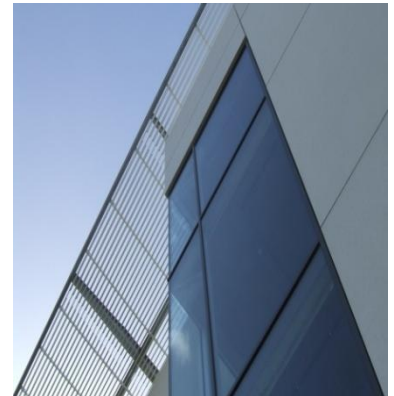
CLIENT:
Daly Group

ARCHITECT:
RKD Architects

PROJECT VALUE:
€28m

PROJECT STATUS:
Phase 1 Completed
September 2007

Phase 2 Completed
January 2009



Apex Business Centre,
Blackthorn Road,
Sandyford,
Dublin 18,
Ireland

T: +353 (0) 1 2932220
F: +353 (0) 1 2932201
E: info@ethoseng.ie

www.ethoseng.ie